



EuroTravNet

The European Travel Medicine Network
of the International Society of Travel Medicine
www.eurotravnet.eu

The ECDC Collaborative Network for Travel and Tropical Medicine

Philippe PAROLA, MD, PhD
Project Coordinator



www.eurotravnet.eu





**Travel Medicine in Europe: existing structures, functions and added-value of ECDC.
Building a network to support Travel and Tropical Medicine related activities at ECDC.
OJ/2008/07/08-PROC/2008/019**

TENDER

ECDC wishes to conclude “a framework contract with a body or network of clinical experts in tropical and travel medicine that will support ECDC for detection, verification, assessment and communication of communicable diseases that can be associated with travelling and specifically with tropical diseases.” This tender further requests to “build, maintain and strengthen a multi-disciplinary network of highly qualified experts with demonstrated competence in the diseases covered by this tender, ideally in the field of travel advice, tropical medicine, clinical diagnosis of the returned traveller, and detection, identification and management of imported infections”.

Home

About us

Activities

Health topics A-Z

News and Media

Publications

Job opportunities

Procurement

Influenza A(H1N1) virus

Virtual Press room →



Latest Novel Influenza Virus A
(H1N1) updates

ecdc
Insight

Vaccines &
Immunisation news

ECDC situation report on Influenza A(H1N1)

18 May 2009

Within the last 24 hours, 14 new confirmed cases were reported in the EU and EFTA countries, reaching a total of 263 confirmed cases reported from 16 countries. The table of figures and the maps will be updated regularly. The ECDC report gives an update of confirmed cases as of today, 18 May, 8:00 hours CEST.

See [ECDC situation report](#)

Outbreak of influenza A(H1N1) virus

[Click here →](#)

NEWS

5/18/2009 3:30:00 PM

Health Communication for Innovation in the EU: a focus on communicable diseases

On 18 -19 May, ECDC is hosting the ECDC/EUPHA cooperative technical meeting which aims to develop a European health communication research agenda.

5/18/2009 8:00:00 AM

ECDC situation report on Influenza A(H1N1)

Within the last 24 hours, 14 new confirmed cases were reported in the EU and EFTA countries, reaching a total of 263 confirmed cases reported from 16 countries. The table of figures and the maps will be updated regularly. The ECDC report gives an update of confirmed cases as of today, 18 May, 8:00 hours CEST.

5/17/2009 12:00:00 AM

ECDC situation report on outbreak of influenza A(H1N1)

Within the last 24 hours, 7 new confirmed cases were reported in the EU and EFTA countries, reaching a total of 249 confirmed cases reported from 16 countries. The

LATEST UPDATES

5/18/2009 3:30:00 PM

Health Communication for Innovation in the EU: a focus on communicable diseases

5/18/2009 8:00:00 AM

ECDC situation report on Influenza A(H1N1)

5/17/2009 12:00:00 AM

ECDC situation report on outbreak of influenza A(H1N1)

5/16/2009 12:00:00 AM

ECDC situation report on outbreak of influenza A(H1N1)

5/15/2009 8:00:00 AM

ECDC situation report on outbreak of influenza A(H1N1)

[More updates](#)

LATEST PUBLICATIONS

5/12/2009 2:00:00 PM

Development of *Aedes albopictus* risk maps

5/11/2009 2:00:00 PM

Meeting report: European pandemic influenza planning assumptions

4/3/2009 12:00:00 AM

Meeting report: Technical meeting on hepatitis A outbreak response

3/31/2009 12:00:00 AM

Meeting report: ECDC

ECDC TV



Eurosurveillance highlights

New Influenza A(H1N1) virus infections in Spain, April-May 2009

Epidemiology of new Influenza A(H1N1) in the United Kingdom, April - May 2009

A preliminary estimation of the reproduction ratio for new Influenza A(H1N1) from the outbreak in Mexico, March-April 2009

Sustained intensive transmission of Q fever in the south of the Netherlands, 2009



How is ECDC organised?

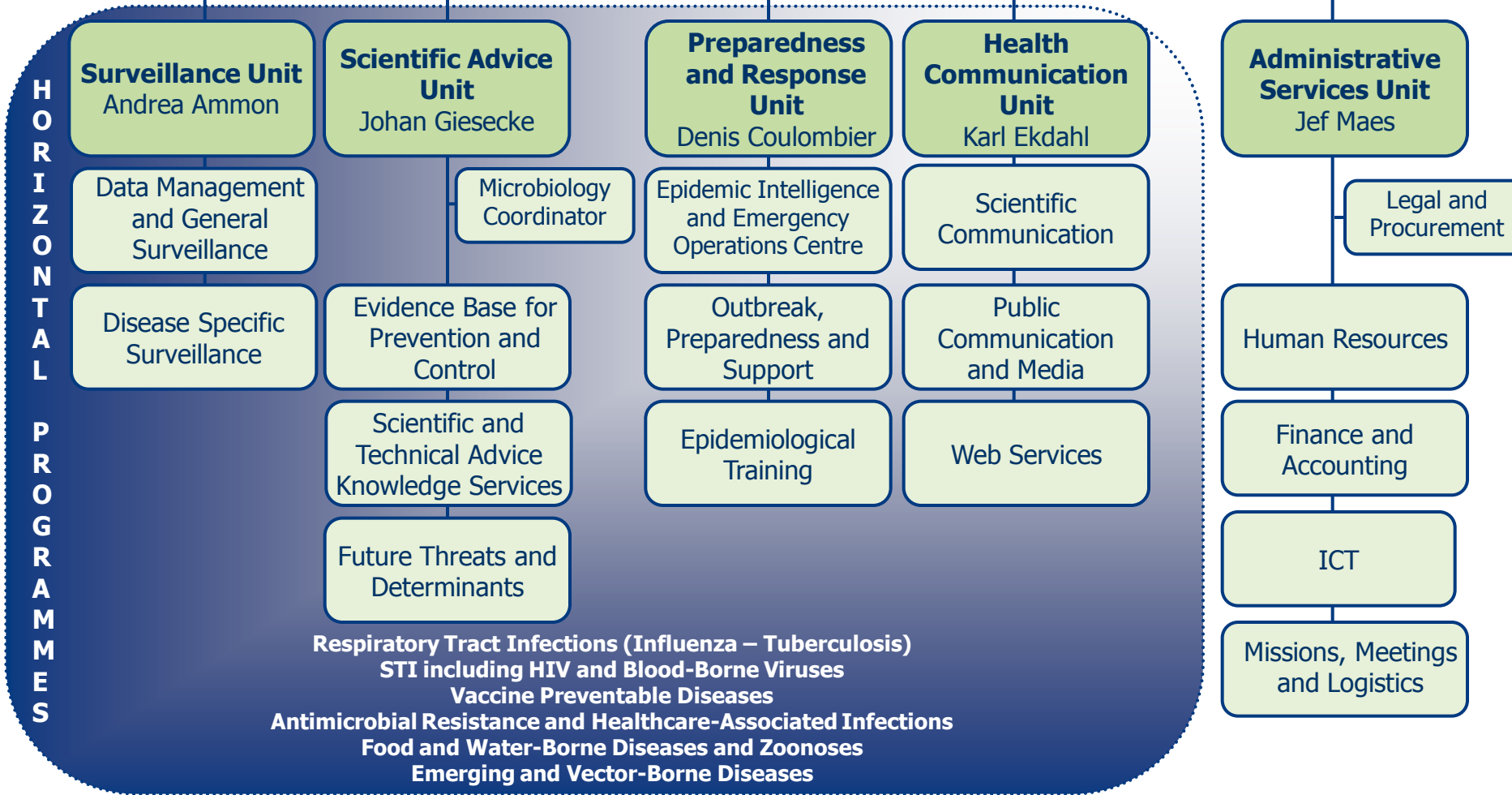
Director
Zsuzsanna Jakab

Cabinet/Office of the Director

- Strategic Management
- Governance
- External Relations, Partnership
- Country Relations

Chief Scientist
Johan Giesecke

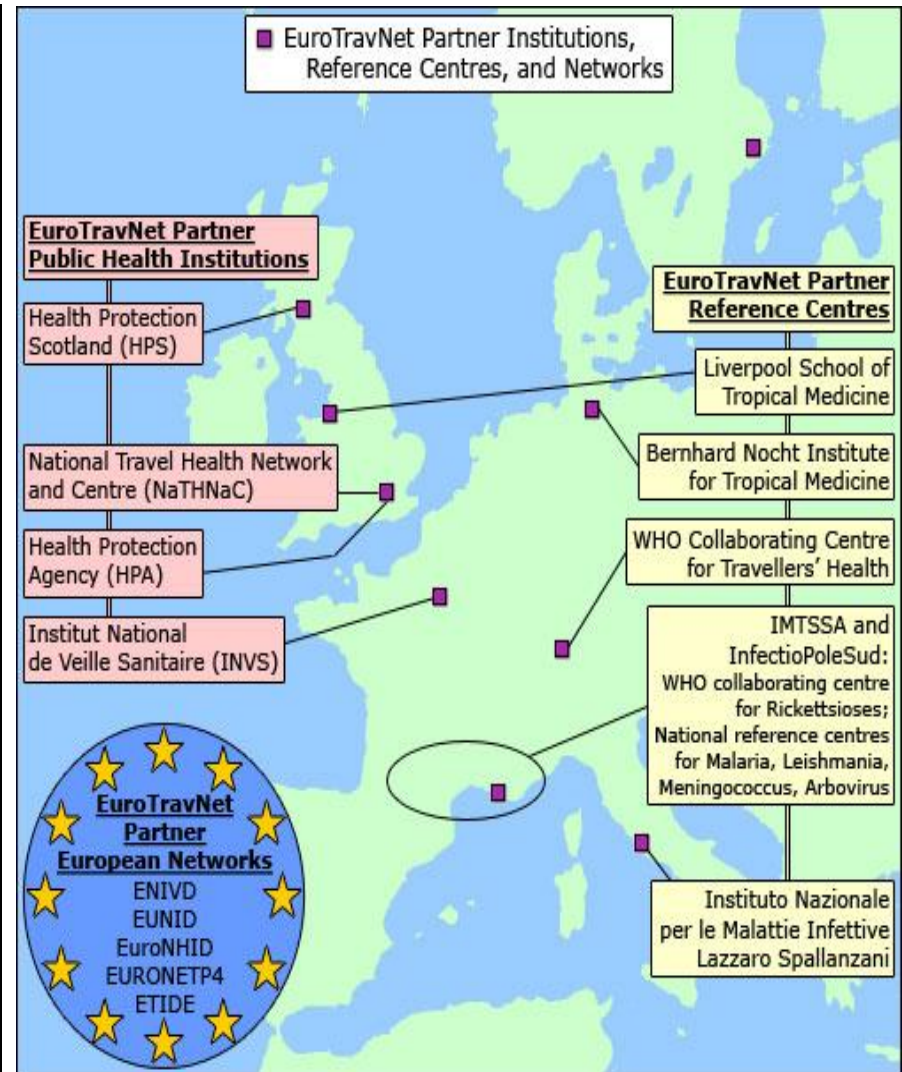
Internal Auditor
Stefan Sundbom





EuroTravNet

The European Travel Medicine Network
of the International Society of Travel Medicine
www.eurotravnet.eu



April 2009: 38 EuroTravNet Core Sites and Members in 19 countries + key partners



- Welcome
- Structure
- Core Sites
- Members
- Partners
- Specific Tasks
- Contact Us
- Links:
 - ISTM
 - ECDC
 - GeoSentinel

WELCOME

The [International Society of Travel Medicine \(ISTM\)](#) has initiated EuroTravNet - the European Travel Medicine Network - to create a network of clinical experts in tropical and travel medicine to support detection, verification, assessment and communication of communicable diseases that can be associated with travelling and specifically with tropical diseases. The goal of EuroTravNet is to build, maintain and strengthen a multi-disciplinary network of highly qualified experts with demonstrated competence in diseases of interest, ideally in the field of travel advice, tropical medicine, clinical diagnosis of the returned traveller, and detection, identification and management of imported infections.

EuroTravNet is the collaborative network of the [European Centre for Disease Prevention and Control \(ECDC\)](#) and has been funded through the public tender "Travel Medicine in Europe: existing structures, functions and added-value of ECDC. Building a network to support Travel and Tropical Medicine related activities at ECDC."

The EuroTravNet founding core sites and members belong to the [GeoSentinel](#) Global Surveillance Network, a worldwide communication and data collection network for the surveillance of travel related morbidity.

SECRETARIAT AND INFORMATION MANAGEMENT

Dr. Philippe PAROLA,
Marseille, Project Director
secretariat@eurotravnet.eu

TRAVEL MEDICINE INVENTORY IN EUROPE

Dr. Patricia SCHLAGENHAUF,
Zurich, Co-ordinator
review@eurotravnet.eu

EPIDEMIC INTELLIGENCE AND RESPONSE

Dr. Philippe GAUTRET,
Pr. Fabrice SIMON,
Pr. Philippe BROUQUI,
and Dr. Philippe PAROLA;
Marseille, Co-ordinators
surveillance@eurotravnet.eu

www.eurotravnet.eu

CORE SITES

What is a EuroTravNet Core Site?

EuroTravNet founding **Core Sites** are EuroTravNet members who participate in the GeoSentinel Network as full surveillance sites in Europe, participating in surveillance and monitoring of all travel-related illnesses seen in their clinic. They submit epidemiologic data linking diagnoses with exposure information. These data are entered into a database and periodically analysed. Information on how to become a GeoSentinel surveillance site is available at the [GeoSentinel web site](#).

MEMBERS

What is a EuroTravNet Member?

EuroTravNet **Members** are ISTM member clinicians located in a European country and working in a clinical site with significant numbers of post-travel patients. They are willing to provide leads and contacts when they encounter patients having unusual imported diseases. They are willing to respond to email queries regarding potential outbreaks or trends in travel-related infections, and participate in discussion within the network. All members are welcome to participate in the annual meeting organised in collaboration with ECDC. Benefit of membership includes recognition as a member of an ECDC collaborative network. It will allow accelerated acquisition of alerts and advisories on breaking events.

[How to become a member?](#)

How to become a member?

To become a EuroTravNet member, applicants need to fulfill the following criteria:

1. Be located in a European country
2. Be an [ISTM](#) Member
3. Be a clinical site with a significant number of post-travel patients
4. Willingness to participate in Member Activities
5. Fill in and submit this [Registration Form](#)

All EuroTravNet members will be automatically enrolled as well as GeoSentinel Network Members. GeoSentinel is ISTM's worldwide data collection and information network. More information about GeoSentinel Network Membership can be found [here](#).

MEMBER REGISTRATION FORM

Registration Form To Become A EuroTravNet Network Member

Note: Street addresses and affiliations will be derived from the ISTM membership database. Non-ISTM members are not eligible for EuroTravNet membership at this time.

NETWORK MEMBER INFORMATION:

Last Name:

First Name:

**Must be the name of the registered ISTM member.*

City:

Country:

Email:

Telephone:
country code city code phone number

Fax:
country code city code phone number

Profession: Physician
 Nurse
 Other

Physicians Only - Check all specialty certifications that apply:

Primary Care Specialty Yes No

Infectious Diseases Yes No

Tropical Medicine Yes No

Occupational Medicine Yes No

Public Health Degree Yes No

24-hour contact: Because of time-zone differences EuroTravNet on rare occasions may need to contact you during non-office hours for urgent follow-up information in clinical event reports. Please provide a single best telephone number for this purpose. This information will be kept confidential and known only to the EuroTravNet Secretariat.

Emergency Contact Number: Home
country code city code phone number Mobile
 Pager



19 countries

12 core sites

26 members

Pending Applications from
Ankara, Turkey
Budapest, Hungary

Special Interest:
Eastern Europe



TENDER SPECIFICATIONS

**Travel Medicine in Europe: existing structures, functions and added-value of ECDC.
Building a network to support Travel and Tropical Medicine related activities at ECDC.
OJ/2008/07/08-PROC/2008/019**

WP 1: Secretariat and information management of the network

WP 2: Travel medicine resources review

WP 3: Support to ECDC's Epidemic Intelligence and Response activities

WP 1: Secretariat and information management of the network

(Co-ordinator: Dr. Philippe Parola, Project Director of EuroTravNet, Marseille, France)

The objectives of WP 1 are to hold a single Network secretariat responsible for :

- the **overall administration** of the EuroTravNet project (including financial oversight),
- the **maintenance of a directory of the network members and their expertise**,
- the organisation of **meetings** of the Steering Committee and Annual meetings of the network members,
- and the preparation and update of **documents/deliverables** for dissemination on the ECDC website.

LESSONS LEARNT FROM EVENTS RESPONSE

ECDC will ask EuroTravNet for advice (risk assessment) on a situation (event).

EuroTravNet may have to collaborate with the ECDC if they need to send a response team.

Each “event” must be followed by a summary of lessons learned.

EuroTravNet will make a first draft of the lessons learned for the ECDC to review and use as they see fit.

Scientific Advances – Swedish traveller with *Plasmodium knowlesi* malaria after visiting Malaysian Borneo.

Bronner U, Divis PC, Färnert A, Singh B, Malar J. 2009 January 16;8:15.

Description

Plasmodium knowlesi is typically found in nature in macaques and has recently been recognized as the fifth species of *Plasmodium* causing malaria in human populations in south-east Asia. Until recently, *Plasmodium knowlesi* malaria in humans was misdiagnosed as *Plasmodium malariae*. Human infection with *P. knowlesi* are now known to be widely distributed across Malaysian Borneo and extend to Peninsular Malaysia. Because *P. knowlesi* replicates every 24 h, rapid diagnosis and prompt effective treatment are essential malaria. The authors describe a case of knowlesi malaria in a Swedish man, who became ill after returning from a short visit to Malaysian Borneo. His *P. knowlesi* infection was not detected using a rapid diagnostic test for malaria, but was confirmed by PCR and molecular characterization.

[Link to the article](#)

<http://www.malariajournal.com/content/8/1/15>

ECDC comment: YYYY-MM-DD

This paper recalls that the diagnosis of malaria infections cannot be only based on rapid diagnostic tests. They often miss the diagnosis of the *P. ovale* and *P. malariae* infections and also the *P. knowlesi* infections. The research of malaria infections must obligatorily comprise a microscopic method with concentration. *P. knowlesi* is still badly known in the European countries. This article shows that the risk is real for the travellers returning from its endemic areas.

[Links if needed](#)

Keywords: Malaria

Events – 11th Conference of the International Society of Travel Medicine (CISTM11)

Date – 2009/05/24-28 – Budapest, Hungary

Description

The 11th Conference of the International Society of Travel Medicine (CISTM11) will held in Budapest, Hungary at the ELTE University Conference Centre from May 24–28, 2009

This conference is intended for all who are interested in state of the art clinical practice, research, and education, in the field of travel and migration medicine. The target audience includes physicians, nurses, pharmacists, and students involved in primary care, occupational, migrant and public health, infectious disease, emergency and wilderness medicine. Also, it is designed to meet the needs of the travel media and industry as well as manufacturers of travel health-related products, drugs and vaccines. The biennial ISTM conferences are established as the leading venue for the practice and science of the discipline of travel medicine. As usual, educational formats will include Plenaries and Symposia, Debates, Workshops, Original Scientific Presentations, Meet the Experts, Case of the Day and abstract presentations. Satellite programs and sponsored events will also be offered.

Link to the website: www.istm.org

Contact: cistm11@istm.org

Keywords : Travel Medicine - Conference - Hungary

Project kick-off meeting of the EuroTravNet Steering Committee, Marseille, January 9-10, 2009. Left to right: Pedro Arias (ECDC), Fabrice Simon, Philippe Parola, Vanessa Field*, David Freedman, Katrin Leitmeyer (ECDC), Pat Schlagenhauf, Frank von Sonnenburg (ISTM), Philippe Brouqui, Philippe Gautret, Francesco Castelli*

* SC
members
Rotative
position
after 2
years



WP 2: Travel medicine resources review

(Co-ordinator: Dr. Patricia Schlagenhauf, Zurich, Switzerland)

Subtask 1: Updated inventory of travel medicine resources (infrastructure and functions) in Europe by country

Subtask 2: Updated inventory of global travel medicine resources (infrastructures and functions) of international organizations and main Organizations outside Europe such as above

Subtask 3: Updated inventory of global travel medicine products issued on a regular basis by travel medicine professionals to assess and manage the risks to health associated with travel to any country in the world

Subtask 4: Make a review of the current guidelines used in Europe (EU Member States, Associated, Candidate and EEA/EFTA countries) for giving pre-travel advice on the main preventable travel-related communicable diseases



European Travel Medicine Inventory

1. Travel Medicine Resources in Europe

Dear Travel Health Provider,

We live in a mobile world and travel medicine is an increasingly important, medical, sub-speciality. In the EU member states and allied countries there has been remarkable growth in this field. The European landscape is rich in historical, tropical and travel medicine traditions and unique in terms of its heterogeneity and component national guidelines. Migration medicine is assuming a great significance with decolonisation and post-colonial population flows and demographic changes in Europe's refugee and asylum processes. To capture the status quo of European resources, EuroTravNet, at the request of ECDC, has been asked to provide an inventory of travel medicine services in Europe. To this end, we need your help in providing concise data on your travel medicine practice. The short questionnaire, available in several European languages, can be completed in five minutes and the resulting inventory is the property of ECDC.

Thank you for your co-operation in mapping travel medicine in Europe.

On behalf of EuroTravNet,

Dr. Patricia Schlagenhaut
WP2 Co-ordinator

Comments/suggestions to me at <review@eurotravnet.eu>

*** 1. Please provide details of your travel medicine practice or clinic or institution**

Name:

Company / Institution:

Address:

Address 2:

City/Town:

State:

ZIP/Postal Code:

Country:

Email Address:

Phone Number:

2. What type of travel health service do you offer?

- Pre-travel consultation
- Yellow Fever Vaccination
- Post-travel consultation
- Diagnostic/Referral services for other travel medicine providers
- Reference laboratory for specific illnesses
- Advice to national authorities
- Input to travel health recommendations
- Training/Educational courses in travel medicine

Other (please specify)

A total of 10 questions

WP 3: Support to ECDC's Epidemic Intelligence and Response activities

Coordinators: Dr Ph. Gautret, Pr Ph. Brouqui, Pr. F. Simon, Dr Ph. Parola, Marseille

**Members will actively participate to these activities:
Support outbreak and cluster detection, verification
and investigation**

**24/7 on call duty system through which ECDC
can access all year round the expertise within the
network**



surveillance@eurotravnet.eu

+33 6 XX XX XX



3 Philippes
1 Fabrice

SITES – MEMBERS
PARTNERS

Eurotravnet@yahoo.fr

2.3.3.1 WP 3, Subtask 1: Participation in the preparation of ECDC's Annual "Threat" Report (ECDC[®])

ECDC will prepare the first draft of the report and EuroTravNet will review it and provide data and short paragraphs of comments and discussion.

EuroTravNet will be expected to have relevant specialists from the network review the sections within their specialty. There is no authorship on the document.

2.3.3.2 WP 3, Subtask 2: Participation in ECDC's epidemic intelligence meeting

Phone Conference Once a week to see if there is any news from the network.

If there is important or urgent news then ECDC should be notified immediately.

2.3.3.3 WP 3, Subtask 3: Ad hoc advice/guidance for risk assessment and risk communication

EuroTravNet will be asked to share information but is not required to provide data in a routine basis.

If EuroTravNet learns about a case that is considered to be “important or very suspicious”, it is expected to report the case to the ECDC (even if the case is just a rumor).

The rumors should be considered credible and the ECDC only needs to be informed if the information implicates a European response.

All such information transmitted to the ECDC will be considered confidential information. If an event is monitored by ECDC, ECDC can request EuroTravNet to provide a summary of the situation in Europe: Number of cases reported in Europe through the Network and places of possible source of infection , for instance.

EXAMPLE OF ECDC REQUEST

Dear colleagues,

I suppose you are all aware there is a rabies outbreak in Bali since last year. A recent Promed posting (attached after the email) mentions local media reporting failure to comply with WHO recommended control measures in the area. Given the uncertainty about immunoglobulin availability they even recommend pre-exposure vaccination for tourists to the area. CDC, after the outbreak was declared, posted a notice in their webpage

<http://wwwn.cdc.gov/travel/contentRabiesBaliIndonesia2008.aspx> which stresses control measures such as avoiding animal bites. It also mentions that GeoSentinel data indicate that the number of requests for rabies post-exposure prophylaxis has increased among travelers returning from Bali since May 2008. **In the US there is temporary unavailability of rabies pre-exposure vaccine.**

What is the situation in Europe? Can we know if requests for rabies post-exposure prophylaxis have also increased among travelers returning from Bali? Is there availability of pre-exposure vaccine for those in risk groups? Does anyone have more information on the current situation in Bali (availability of Ig, vaccine, etc.)?

Best regards

ANSWERS IN 72 HOURS

Last alert from EuroTravNet

Fabrice Simon from the Military Hospital Laveran in Marseille has just diagnosed a case of imported **Chikungunya infection in an Air France Hostess who spent a couple of days in Singapore.**

The French hostess developed fever, polyarthritits and rash on the 06/04/09.

Diagnosis was confirmed with molecular tools on blood sampled on the 08/04/2009.

She has stayed for her job in Singapore from 02/04/2009 evening to 04/04/09 evening.

(No previous trip in the 2 previous weeks).

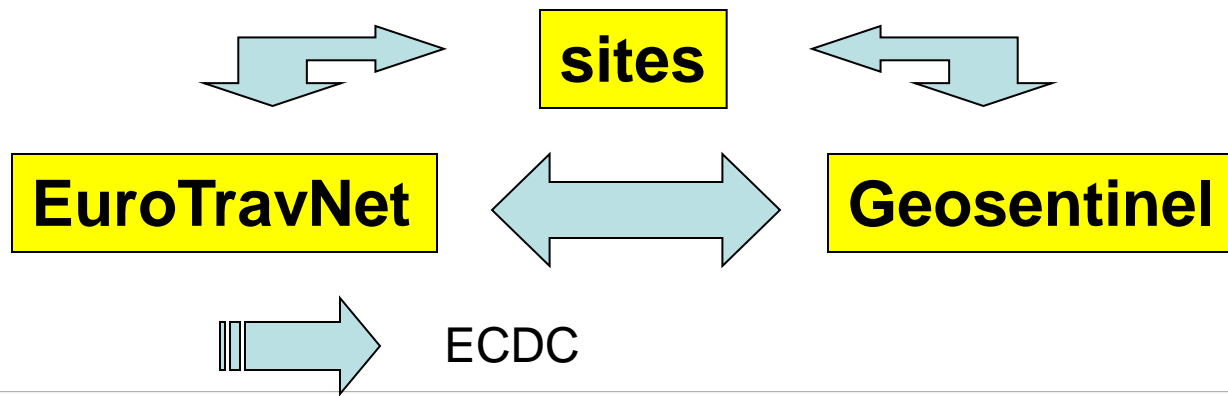
The spots that she visited were : botanic garden, rain forest, Sentosa island, Little India and Chinatown quarters. Mosquito bites on the 03/04/2009. No excursion out of Singapore.

ISSUES:

- The activity of *Ae. albopictus* has probably started in southern Europe: potential for local transmission (remember Italy 2007).

- Exposure in Singapore.

- PROMED Report



From Poh Lian Lim in Singapore (Geosentinel site in Singapore) in Connection with Ministry of health

« We have not been seeing any recent upsurge in Chikungunya local transmission, so this notification was a bit surprising.

The case load has dropped off significantly and we are only seeing sporadic cases. The last Chik case I saw a month ago acquired her infection from Kuala Lumpur, Malaysia.

Our MOH is contacting Philippe to see if more details can help us pinpoint any transmission issues. We appreciate the notification from Philippe, Euro TravNet & GeoSentinel, and our MOH will proactively pursue public health measures as appropriate »

2.3.3.4 *WP 3, Subtask 4: Participation in the Epidemic Intelligence System (EPIS)*

EuroTravNet will actively participate in/contribute to EPIS, a platform for technical risk assessment and risk communication that will be linked to the Early Warning and Response System (EWRS) IT application.

A travel medicine and risk assessment forum will be established on an EPIS network.

Information can be posted on this password-secured website to avoid distributing information via email (which is not deemed reliable).

Core sites will be given access to EPIS. Any user will be able to initiate discussion. Special forums will be developed for specific topics or diseases. Different levels of forums will be established and the ECDC will control who has access to certain forums.



EuroTravNet

EuroTravNet Steering Committee

WP 1 + WP 2 + WP 3 representatives
 2 representatives from 2 Core Sites*
 Dr. V. Field, UK**
 Dr. M. F. Castelli, Italy**
 GeoSentinel Director: Pr. D. Freedman

2 yearly SC Meetings
 1 yearly Network Meeting
 ECDC/EuroTravNet websites

WP 1: Secretariat and information management. Co-ordinator: Dr. Ph. Parola, Director of EuroTravNet, France

ISTM & GeoSentinel

Protisavalor
 financial and legal management

Special Consultants

WP 3: Epidemic Intelligence and Response activities. Co-ordinators: Pr. Ph. Brouqui, Dr. Ph. Gautret, France

WP 2: Travel medicine resources review
 Co-ordinator: Dr. Patricia Schlagenhauf, Switzerland

Partner Networks
 ENIVD - EuroNHID
 EUDID - EURONETP4

Expert Panel

External Experts

Partner Institutions
 NaTHNaC/HPS/HPA – INVS – WHO Coll Centres – IMTSSA
 LSTM - BNIT- InfectioPoleSud

38 EuroTravNet Core Sites and Members in 19 countries



Request



Generic dial-in number
and email (24/7)



WP 3:
Epidemic Intelligence and
Response activities

Partner Networks
ENIVD - EuroNHID
EUDID - EURONETP4

Partner Institutions
NaTHNaC/HPS/HPA- INVS -
WHO Coll Centres - IMTSSA
LSTM - InfectioPoleSud

External
Experts

ISTM/
GeoSentinel

WP 1:
EuroTravNet
Secretariat and
information
management

Expert Panel

List Serv
System

Alerts
from
Sites

EuroTravNet within 19 Countries : 12 Core Sites & 26 Network Members

Flow chart detailing request and information exchange for EuroTravNet

First EuroTravNet Annual Meeting Stockholm April 2009





THANK YOU

www.eurotravnet.eu